

Mapping Wastewater Pipes

Our Standard Solutions

Wastewater pipes are usually the oldest sub-surface utility in town. Whether they operate under pressure or by gravity, up to date positional and inclination data is often missing.

Our Gyro mapping solutions provide highly accurate, high frequency XYZ and inclination data, which is essential for managing flow and maintenance.



Accurate 3D As-built map

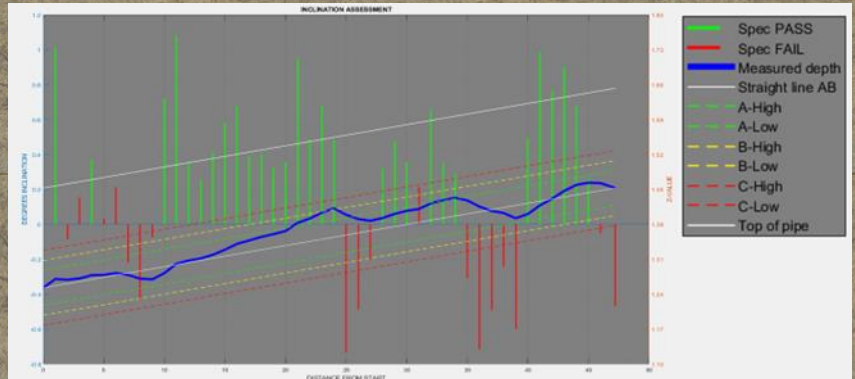
To avoid excavation and cross-bore damage risk, or to calculate the pressure in a sewer, an accurate as-built map is essential.

Gyro mapping requires just 20 minutes access to a pipe segment, so when integrated in the new-built installation or maintenance process, the incremental cost is very low.








Grade/inclination assessment

Only gyro systems provide such high resolution to identify even the smallest changes in inclination in a gravity sewer.

Standard output compares the measurement results against new-build grade specifications or any known tolerance classification.



Common specifications across all systems

Mean travelling speed	1 m/s - 3 ft/s	Inclination range	+45° to -45°
Data logging rate	100 Hz	Maximum acceleration	5g
Operating temperature	0°C to 50°C / 32°F to 120°F	Standard Software	X-Traction and X-View
Output Compatibility	      		

DR-2 specifications

Probe length	±800mm/31.5"	Gyroscope type	FOG
Probe outer diameter	36mm / 1.4"	Max. segment length	Recomm.1,500m/5,000'
Probe weight	2.0kg / 4.4 lb.	Pressure sewer ID range	40-75 mm / 1.6" - 3.0"
Max. pulling force	75kg / 165 lb.	Battery type/Autonomy	Li-ion / 5 hours



ABM-90 specifications

Probe length (ex. wheels)	490mm / 19.3"	Gyroscope type	MEMS
Probe outer diameter	42mm / 1.7"	Max. segment length	300m/1,000'
Probe weight	2.0kg / 4.4 lb.	Sewer Pipe ID range	80+mm / 3.5+"
Max. pulling force	150kg / 330 lb.	Battery type/Autonomy	Li-ion / 5 hours



IWS-1440 Invert Wheel Extension Set

Max. pulling force	150kg / 330 lb.	Pipe ID range	150-1000 mm / 6" - 40"
--------------------	-----------------	---------------	------------------------



IWS-1000+ Invert Wheel Frame

Max. pulling force	150kg / 330 lb.	Pipe ID range	>1000 mm / >40"
--------------------	-----------------	---------------	-----------------

